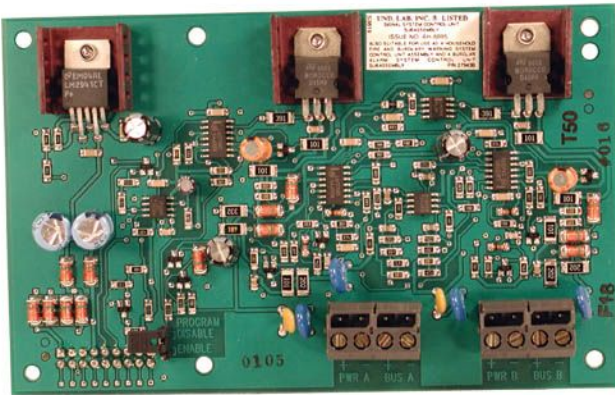




# DS7436 Multiplex Expansion Module



The DS7436 is a two-loop Multiplex Expansion Module for use with the DS7400Xi Series Control Panels. It connects directly to the DS7400Xi board and provides a two-wire multiplex bus for the connection of up to 120 remote points. Each bus is isolated to so that failure in one bus will not cause failure in the other.

## Installation/Configuration Notes

### Compatibility Information

Control Panels      DS7400Xi Series

### Powering Modules and Detectors

The Bus Power output is for connection of separately powered multiplex devices, such as the DS7432 Eight-input Remote Module. If using separate powered detectors, they should be powered from the auxiliary power terminals of the control panel.

### Wiring

Up to 610 m (2000 ft) of 0.8 mm (22 AWG) or 1525 m (5000 ft) of 1.2 mm (18 AWG) wire may be used for the multiplex loop. Do not use shielded cable. Do not share cable with the keypad lines.

## Technical Specifications

### Outputs

Current (DC Bus):	200 mA per bus
Current (MUX Bus):	75 mA per bus

### Power Requirements

Current Required:	130 mAh Standby or Alarm
-------------------	--------------------------

## Ordering Information

DS7436 Multiplex Expansion Module	DS7436
Connects directly to the DS7400Xi Control Panel and provides a two-wire multiplex bus for connecting up to 120 remote points.	