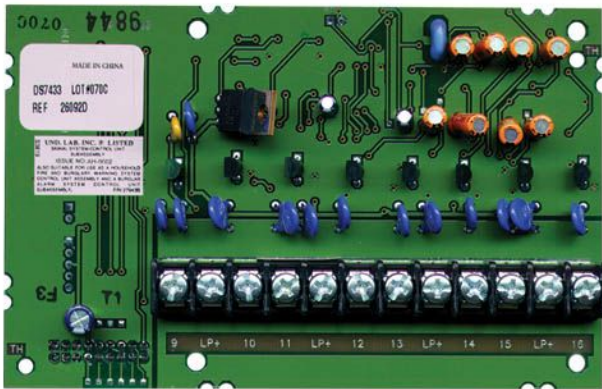




DS7433 Series Eight-input Modules



- ▶ Expand up to 16 hard-wired control panel points
- ▶ Compatible with DS7400Xi Series Control Panels

The DS7433 Series Eight-input Modules include the DS7433 and the DS7433E. The modules connect to DS7400Xi Series Control Panels and expand them to supervise sixteen hard-wired points. Use expansion points nine to 16 to connect normally-open (N/O) or normally-closed (N/C) alarm contacts. The expansion points can also be used with compatible two-wire smoke detectors. Use one module per DS7400Xi system.

UL1023, Household Burglar Alarm System Units
CSFM, MEA

Model	Certifications and Approvals
DS7433E	CE

Functions

Selectable End-of-Line (EOL) Resistor Mode for DS7433E

A jumper located on the printed circuit board (PCB) selects single or serial dual EOL resistor mode for the DS7433E.

Installation/Configuration Notes

Compatibility Information

Compatible Panels DS7400Xi Series

Certifications and Approvals

Model	Certifications and Approvals
DS7433	UL1610 and UL1635, Central Station Alarm Units
	UL365, Police Station Alarm Units
	UL864, Control Units, System
	UL985, Control Units and Accessories-household System Type
	UL609, Local Alarm Units

Technical Specifications

Power Requirements

Current Draw:	<ul style="list-style-type: none">• 65 mA standby• 80 mA with one point in alarm• Add 15 mA for each additional point in alarm
DS7433 EOL Resistor:	2.21 k Ω
DS7433E EOL Resistor:	<ul style="list-style-type: none">• 2.2 kΩ• 2.2 kΩ + 1.5 kΩ
Loop Impedance:	60 Ω maximum
Voltage (Operating):	12 VDC nominal

Ordering Information

DS7433 Eight-Input Module	DS7433
Expands DS7400Xi Series Control Panels to supervise sixteen hard-wired points. Use one module per DS7400Xi system.	

DS7433E Eight-Input Module	DS7433E
Expands DS7400Xi Series Control Panels to supervise sixteen hard-wired points. Use one module per DS7400Xi system. Provides selectable end-of-line (EOL) resistor mode.	

Americas:
Bosch Security Systems
130 Perinton Parkway
Fairport, New York, 14450, USA
Phone: +1 585 223 4060
Fax: +1 800 289 0096
security.sales@us.bosch.com
www.boschsecurity.us

Europe, Middle East, Africa:
Bosch Security Systems B.V.
P.O. Box 80002
5600 JB Eindhoven, The Netherlands
Phone: +31 40 27 83955
Fax: +31 40 27 86668
emea.securitysystems@bosch.com
www.boschsecurity.com

Asia-Pacific:
Bosch Security Systems Pte Ltd
38C Jalan Pemimpin
Singapore 577180
Phone: +65 6319 3450
Fax: +65 6319 3499
apr.securitysystems@bosch.com
www.boschsecurity.com

Represented by