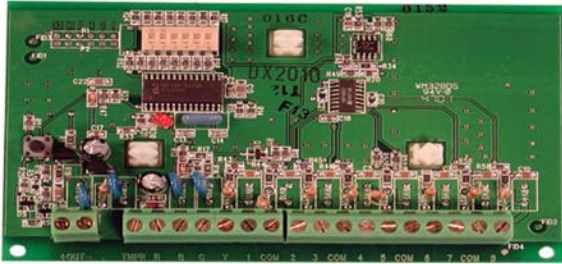




DX2010 Series Input Expander



- ▶ Up to eight sensor input loops
- ▶ Directly connects to the control panel data bus

The DX2010 Input Expander connects directly to the data bus of a compatible control panel. Each expander adds eight input loops. Install up to five expanders in a control panel's enclosure (three on the interior sidewalls and two on the back wall of the enclosure).

Certifications and Approvals

NF A2P Type 2 Certification number: 122000076-03

Installation/Configuration Notes

Compatibility Information

Control Panels Easy Series (ICP-EZM2-NA, ICP-EZM2-UK, ICP-EZM2-LC), D4412, D6412, DS7220V2, and DS7240V2

Technical Specifications

Outputs

Outputs: 100 mA, 12 VDC supervised output for accessories

Environmental Considerations

Operating Temperature: 0°C to +50°C (+32°F to +122°F)

Relative Humidity: 5% to 85% at +30°C (+86°F), non-condensing

Loop

Inputs: Up to eight inputs
Input contacts may be normally-open (NO) or normally-closed (NC) with appropriate end-of-line resistor(s) for supervision.

Resistance: 60Ω maximum

Terminal Wire Size: 1.8 mm (14 AWG) to 0.8 mm (22 AWG)

Power Requirements

Current (Maximum): 35 mA standby
35 mA maximum with connected accessories

Voltage (Operating): 8 VDC to 14 VDC

Ordering Information**DX2010 Input Expander** DX2010

Adds eight input loops. Connects directly to the control panel data bus. Five per enclosure.

Provides hard-wired expansion for an additional eight input points. Includes the DX2010 board.

DX2011 Package DX2011

Adds eight input loops. Connects directly to the control panel data bus. Five per enclosure.

Includes a DX2010 Input Expander with a D203 Metal Enclosure.

DX2012 Package DX2012

Adds eight input loops. Connects directly to the control panel data bus. Five per enclosure.

Includes a DX2010 Input Expander with an AE20 Plastic Enclosure.

Accessories**AE20 Universal Plastic Enclosure** AE20

Mounts to a single gang/double gang box, a 9 cm (3.5 in.) octagonal box, or a 10 cm (4 in.) square box. The dimensions are 12 cm x 16 cm x 4 cm (4.7 in. x 6.2 in. x 1.5 in.). Accommodates wall tamper switches on the modules.

D203 Enclosure D203

Works with input, output, and receiver modules where the circuit boards have through-hole or three-point mounting systems.

Europe, Middle East, Africa:

Bosch Security Systems B.V.
P.O. Box 80002
5600 JB Eindhoven, The Netherlands
Phone: + 31 40 2577 284
Fax: +31 40 2577 330
emea.securitysystems@bosch.com
www.boschsecurity.com

Americas:

Bosch Security Systems, Inc.
130 Perinton Parkway
Fairport, New York, 14450, USA
Phone: +1 800 289 0096
Fax: +1 585 223 9180
security.sales@us.bosch.com
www.boschsecurity.us

Asia-Pacific:

Bosch Security Systems Pte Ltd
38C Jalan Pemimpin
Singapore 577180
Phone: +65 6319 3450
Fax: +65 6319 3499
apr.securitysystems@bosch.com
www.boschsecurity.com

Represented by