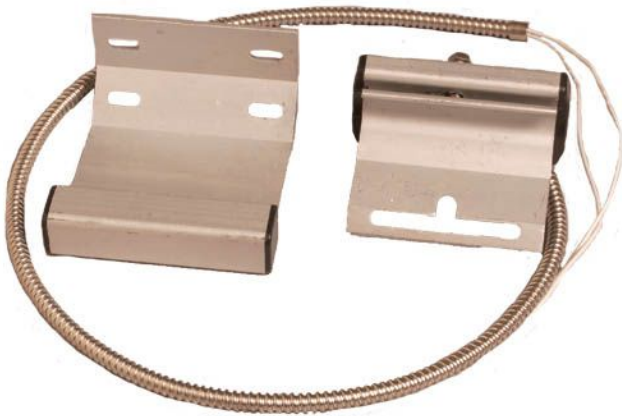




ISN-C66 Track Mounted Overhead Door Contact



- ▶ Closed loop
- ▶ Mounts on door tracks
- ▶ Sturdy and solid
- ▶ Four-way magnet bracket
- ▶ Installs better and faster than standard overhead contacts

The contact is available in a metal finish. It has a wider gap for reduced false alarms and a four-way adjustable magnet bracket. It includes an armored cable. Use for mounting on door tracks.

Certifications and Approvals

UL and CE

Installation/Configuration Notes

Compatibility Information

All contact models are compatible with control panel models that accept contact inputs.

Parts Included

Quantity Per Package	Component
1	Assembly (contact and bracket)
1	Magnet

Technical Specifications

Gap Width:	44.45 mm (1.75 in.)
Contact Assembly and Bracket Dimensions:	76.2 mm x 66 mm x 45.8 mm (3.07 in x 2.60 in. x 1.80 in.)
Cable Length:	46 cm (18 in.)
Switch Configuration Type:	Single pole single throw (SPST)
Maximum Contact Resistance:	150 $\mu\Omega$ (micro-ohm)
Minimum Breakdown Voltage:	250 VDC
Insulation Resistance:	$10^{10} \Omega$
Electrostatic Cap:	0.3 PF
Contact Capacity:	10 VAC
Maximum Conductive Current:	1.0 A
Maximum Voltage:	100 V

Package Information

ATTENTION! Each package contains one assembly with contact, bracket, and one magnet.

Ordering Information

ISN-C66 Track Mounted Overhead Door Contact ISN-C66