

# BL 200 Strobes



**BOSCH**

## Table of Contents

<b>1.</b>	<b>Product Description</b> .....	<b>2</b>
<b>2.</b>	<b>Features</b> .....	<b>2</b>
<b>3.</b>	<b>Planning Notes</b> .....	<b>2</b>
<b>4.</b>	<b>Scope of Delivery</b> .....	<b>2</b>
<b>5.</b>	<b>Device Design</b> .....	<b>3</b>
<b>6.</b>	<b>Installation</b> .....	<b>3</b>
6.1.	Mounting Hints .....	3
6.2.	Assembly Diagram .....	4
<b>7.</b>	<b>Information on Maintenance and Service</b> .....	<b>4</b>
7.1.	Repair .....	4
7.2.	Disposal .....	4
7.3.	Additional Documentation .....	4
<b>8.</b>	<b>Technical Data</b> .....	<b>5</b>
<b>9.</b>	<b>Abbreviations</b> .....	<b>5</b>

## 1. Product Description

The BL 200 strobe is a universally-applicable optical signal transmitter for producing an optical alarm. It is designed for connection to security systems. The base is surface-mounted.

## 2. Features

- Compact, robust, and maintenance-free
- Signal transmitter top in white, red, yellow or green
- Operating voltage 12 V DC and 24 V DC
- Strobe flashes once a second with high light emission utilizing Xenon strobe tubes.
- Simple mounting with bayonet lock
- Polarity-safe connections
- Electronic circuit sealed
- Suitable for interior and protected exterior use (protection class IP 65)

## 3. Planning Notes

- The strobe is intended for surface mounting; cable feed is possible on the surface and concealed.
- Can be connected to the following Bosch panels:
  - BZ 500 LSN
  - UEZ 2000 LSN
  - UGM 2020
  - FP 102/104/106
  - BZ 1060
  - UEZ 1000

## 4. Scope of delivery

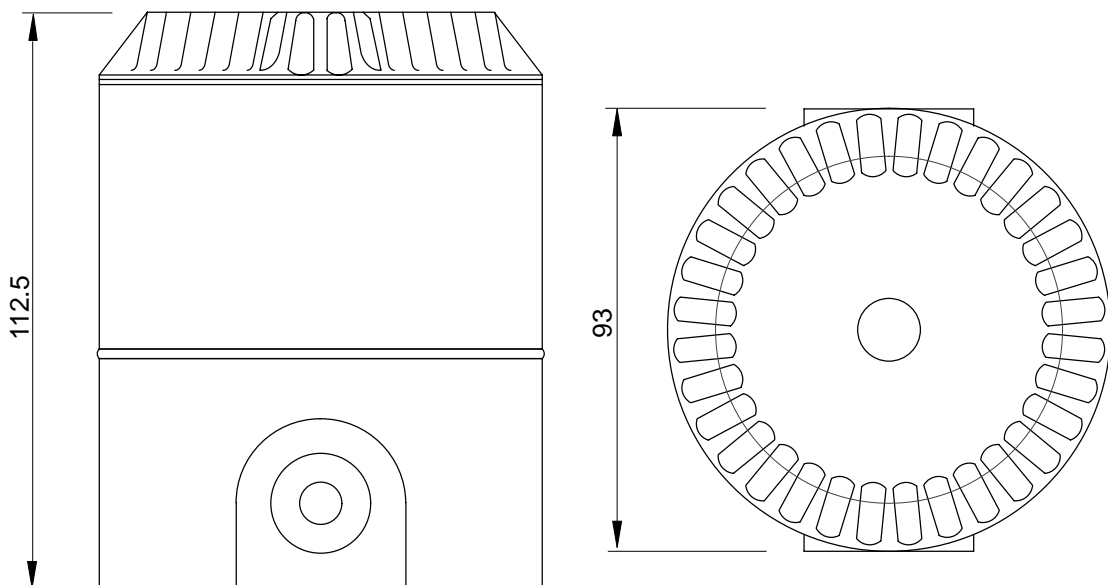
Product ID	DU*	Designation
4.998.152.217	ST	BL 200 strobe white, 12 V / 24 V, surface-mounting base, surface and concealed cable feed, IP 65
4.998.152.218	ST	BL 200 strobe red, 12 V / 24 V, surface-mounting base, surface and concealed cable feed, IP 65
4.998.152.219	ST	BL 200 strobe yellow, 12 V / 24 V, surface-mounting base, surface and concealed cable feed, IP 65
4.998.152.220	ST	BL 200 strobe green, 12 V / 24 V, surface-mounting base, surface and concealed cable feed, IP 65

\*DU = Delivery unit



## 5. Device Design

The BL 200 strobe consists of the signal transmitter and surface-mounting base. The signal transmitter part contains the complete electronics and terminal block. The mounting base has pre-prepared openings that enable either surface or concealed cable feed.



## 6. Installation

### 6.1. Mounting hints

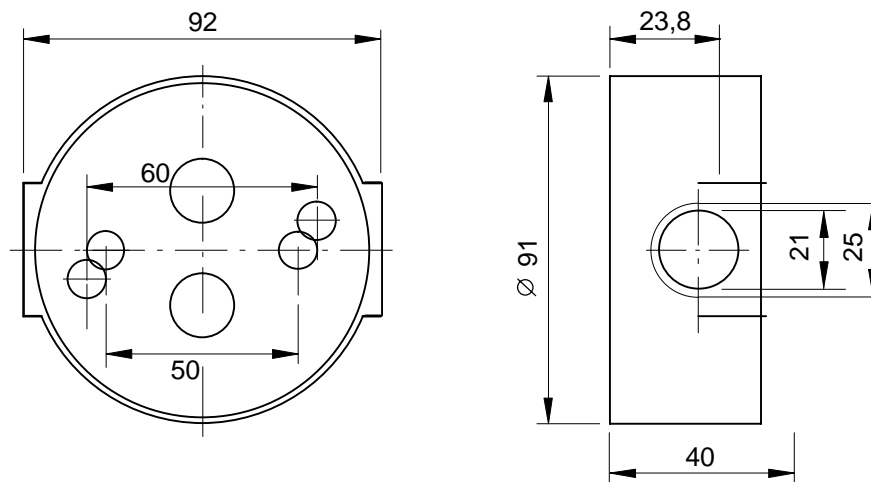
- The strobe is suitable for mounting in interior and protected exterior areas.
- The signal transmitter top is connected to the base by a bayonet lock.
- The strobe lens is screwed onto the base and has a locking screw to prevent unintended removal.
- The pre-punched openings on the mounting base for the fastening screws and cable feeds must be broken out or drilled through.



**Before connection, the strobe must be secured against unauthorized activation ! The device generates high voltage, which can remain for some minutes after switching off!**

- Connect the mounting base and signal transmitter with the enclosed screws.

## 6.2. Assembly Diagram



## 7. Information on Maintenance and Service

For maintenance and inspection work on fire systems, in Germany the regulations of DIN VDE 0833 apply, which refer to the maintenance interval according to the manufacturer's instructions.

- Bosch Security Systems recommends a functional and visual inspection at least once a year.
- Maintenance and inspection work should be carried out regularly and by trained personnel.



**Before maintenance and service work, the strobe must be secured against unauthorized activation !  
The device generates high voltage, which can remain for some minutes after switching off!**

### 7.1. Repair

In case of defect, the strobe is exchanged completely.

### 7.2. Disposal

Defective devices should be disposed of according to the legal instructions.

### 7.3. Additional Documentation



For those with access authorization, on the Bosch ST ExtraNet at [www.boschbest.de](http://www.boschbest.de) the current information for each product, as well as the installation instructions supplied with the device, are available for download as a PDF file.

## 8. Technical Data

Operating voltage	12 V DC/ 24 V DC
Current consumption	100 mA @ 12 V DC 170 mA @ 24 V DC
Switch-on current	< 1 A
Flash frequency	1 Hz ( $\pm 10\%$ )
Flash energy	0.7 Joule @ 12 V DC 1.3 Joule @ 24 V DC
Lifespan - min. - max.	5,000,000 flashes 50,000,000 flashes
Permissible operating temperature	-20°C . . . +55°C
Protection type	IP 65
Housing: - material - base color - strobe lens color	Polycarbonate (PC) red, RAL 3001 red, white, yellow or green
Dimensions - diameter - height with base	Ø93 mm 112.5 mm
Weight	300 g

## 9. Abbreviations

aP	=	surface-mounted ( <b>auf Putz</b> )
BMZ	=	Fire panel
DIN	=	German Institute for Standardization
EN	=	European Standard
UEZ	=	Universal European Fire Panel ( <b>Universelle Europazentrale</b> )
UGM	=	Universal Security System ( <b>Universelle Gefahrenmeldezentrale</b> )
uP	=	flush-mounted ( <b>unter Putz</b> )
VDE	=	Association of German Electrical Engineers
VdS	=	Schadenverhütung GmbH



**Bosch Security Systems**  
**Robert-Koch-Str. 100**  
**D-85521 Ottobrunn**

**Info-Service**

**Telephone: +49 89 6290 - 1039**

**Fax: +49 89 6290 - 1039**

**[www.bosch-sicherheitssysteme.de](http://www.bosch-sicherheitssysteme.de)**

**[info.service@de.bosch.com](mailto:info.service@de.bosch.com)**

