

MSA-LSN C 4w surface-mount magnetic contact



Security Systems



- LSN surface-mount magnetic contact
- VdS class C
- Head-on or parallel installation
- LSN Perimeter protection

Magnetic contacts are used for tear-off surveillance of doors and windows.

Parts Included

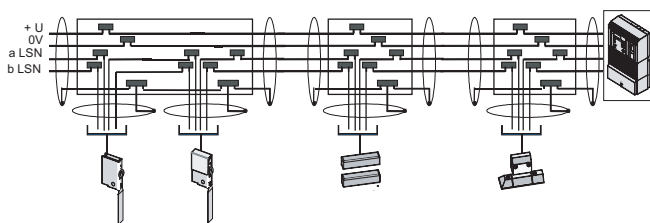
Qty.	Components
1	MSA-LSN C 4w Surface-mount magnetic contact, incl. 4m cable and 2x AG4 surface-mounting housing with accessories

Certificates and Approvals

VdS approval no.: G 104006, Class C

Installation/Configuration Notes

Connecting LSN contacts



- Every LSN contact is a physical LSN element (1 out of 127 possible per loop).
- The length of LSN connection cables must be included when planning the total line length of the LSN loop since

LSN technology is integrated into these detectors.

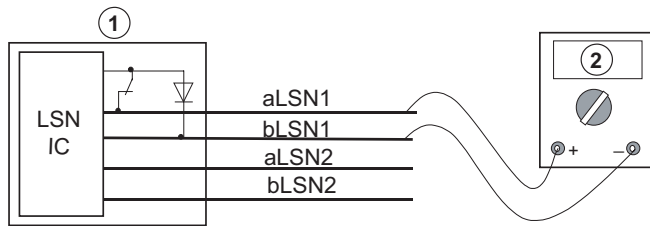
- Passive coupling elements for joining the connection cables to the installation cable must be placed as close as possible to the LSN contacts since 1m connection cable with 2m LSN cable length is included in the calculation of the LSN cable length (LSN is carried into the contacts and back out again).
- Connector boxes are classified as installation material.
- When using flush- and surface mount magnetic contacts, please be aware that installation in **ferromagnetic materials** is not permissible for either the contact or the magnets. LSN MSE-LSN B 4w magnetic contacts in conjunction with EG1 and MSE-LSN C 4w with EG2 are an exception to this. When using MSA-LSN B 4w and MSA-LSN C 4w surface-mounting magnetic contacts, installation is carried out on ferromagnetic materials via the AG 4 surface-mounting housing.

Testing of LSN contacts

Reed switch and microswitch functions can be checked before installation by a high-ohm multimeter or continuity checker (for diode paths).

The resistance values are rough values; a large change in resistance is significant here.

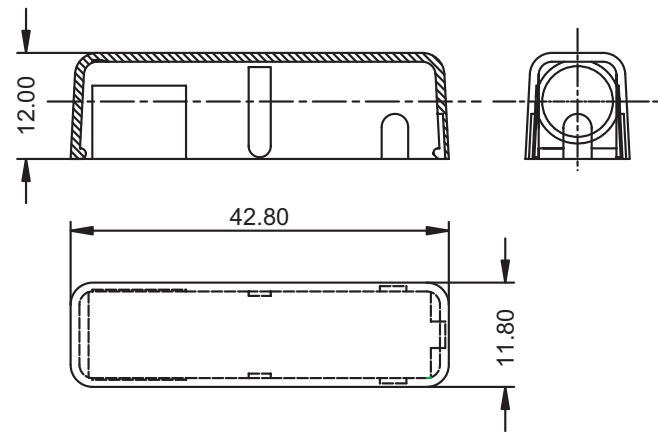
2 | MSA-LSN C 4w surface-mount magnetic contact



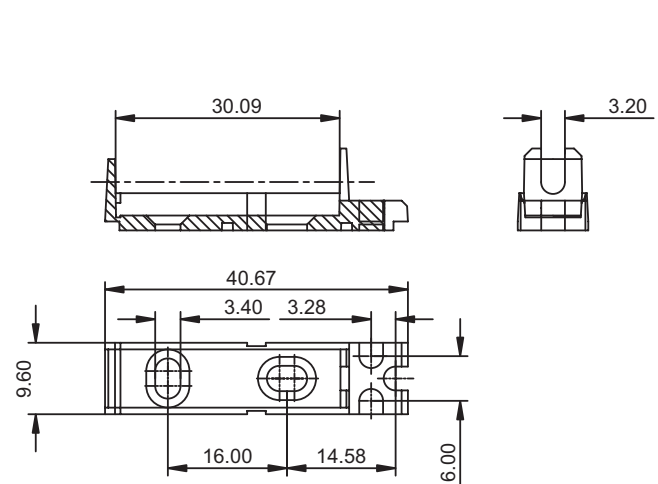
- 1 Detector
 2 Multimeter:
 Contact open: approx. 3 MOhm
 Contact closed: approx. 1 MOhm

Notice: Only the intrusion contact can be checked in this way. The tamper contact of the Class C magnetic contact can currently only be checked by the LSN control panel.

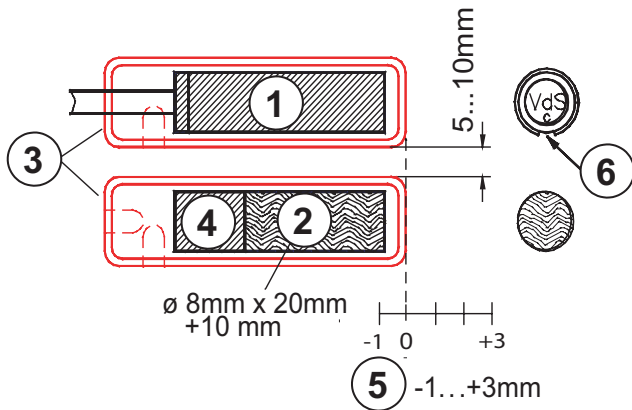
AG4 - top part of housing



AG4 - base of housing



Notice: According to VdS, the top and bottom parts of the housing must be glued to each other (e.g. with plastics glue L530, HAWA material no. 4.998.040.353)



- 1 Contact
 2 Magnet
 3 AG4 surface mounting housing
 4 Plastic part
 5 Magnet offset in the axial direction
 6 Warning! The adjustment mark must point to the magnet.

The surface mounting version is implemented via the AG4 surface mounting housing and enables installation on ferromagnetic materials.

Technical Specifications

MSA-LSN C 4w surface-mount magnetic contact	
Type of installation	Built-in, parallel or head-on
Operating voltage	max. 33V _~
Reed contacts	2x normally open contact
Switch tolerance	$\geq 10^7$
Magnet	AlNiCo 500
Switch dimension:	Ø 8mm x 30mm
Magnet dimension:	Ø 8mm x 20mm + 10mm spacer
Axial installation distance:	5...10mm
AG4 Surface-mounting housing (HxWxD)	11 mm x 11.8mm x 42.8mm
Temperature range	-25°C to 70°C
Connection cable:	4m, LiY(St) Y 4x0.14mm ² with screen, exterior-Ø 3.2mm
Protective system	IP68
Wire colors	aLSN : 2x green b1LSN : brown b2LSN : yellow

Ordering Information

MSA-LSN C 4w surface-mount magnetic contact	4.998.133.984
---	---------------

Bosch Security Systems

For more information please visit
www.boschsecuritysystems.com

BOSCH