

Building Integration System - The Access Engine

The Access Engine



Security Systems

1

ST-IST/PRM1 | 08/2006 | © Robert Bosch GmbH reserves all rights even in the event of industrial property rights. We reserve all rights of disposal such as copying and passing on to third parties.



BOSCH

Building Integration System - The Access Engine

What is BIS Access Engine ?

- It is one of the central software modules of the Building Integration System
- It's a fully integrated access control solution with corresponding access hardware
- It is “just” a license to use a wide range of access control features inside the entire BIS system
- The installable software you got with BIS installation CD
- It extends your existing BIS security or video management solution with sophisticated access functionality



What is BIS Access Engine ?

→ It offers solutions to monitor and control

- Bosch AMC and LACi access controller series with the corresponding readers and I/O boards
- Elevators
- Parking lots with barriers and traffic lights
- Guard tours
- ...



Building Integration System - The Access Engine

Access Engine meets your requirements

- BIS Access Engine is designed modular
- Start with the basic package already including sophisticated features, such as anti-passback, route check, blacklist and other
- Extend your system by licensing the number of cardholders and necessary entrances
- Extend seamlessly the access control's security level using area balancing, mantrap, video verification or other features from a wide range



Security Systems



BOSCH

Building Integration System - The Access Engine

Access Engine meets your requirements

- Use your access control hardware as guard tour equipment
- Arm/disarm your intrusion detection system via access reader*
- Extend seamlessly to access alarm management using the BIS common features, such as location maps or action plans
- Combine with video for a video verification or additional door monitoring

*not supported by all IDS brands/types



Security Systems

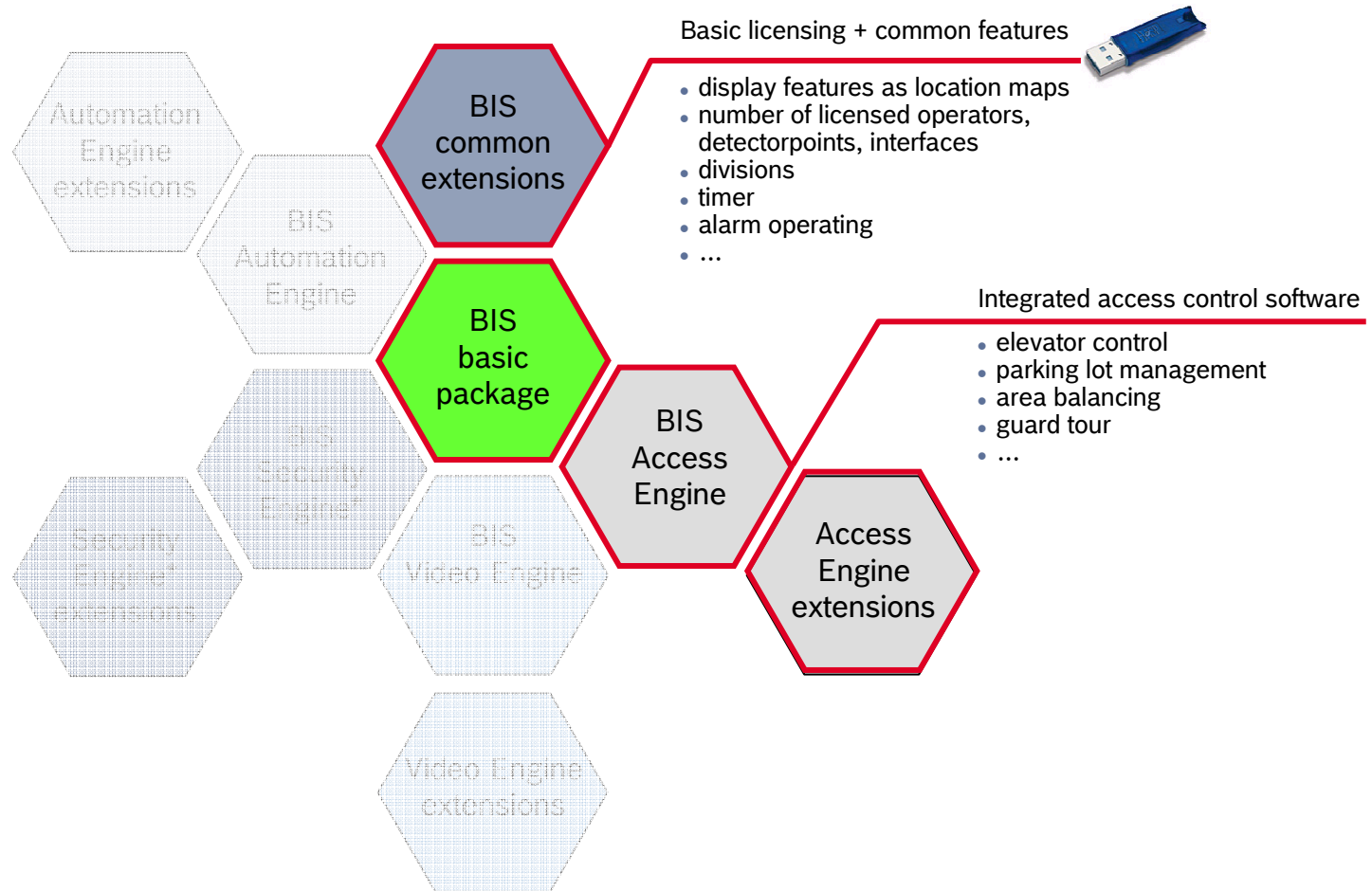
ST-IST/PRM1 | 08/2006 | © Robert Bosch GmbH reserves all rights even in the event of industrial property rights. We reserve all rights of disposal such as copying and passing on to third parties.



BOSCH

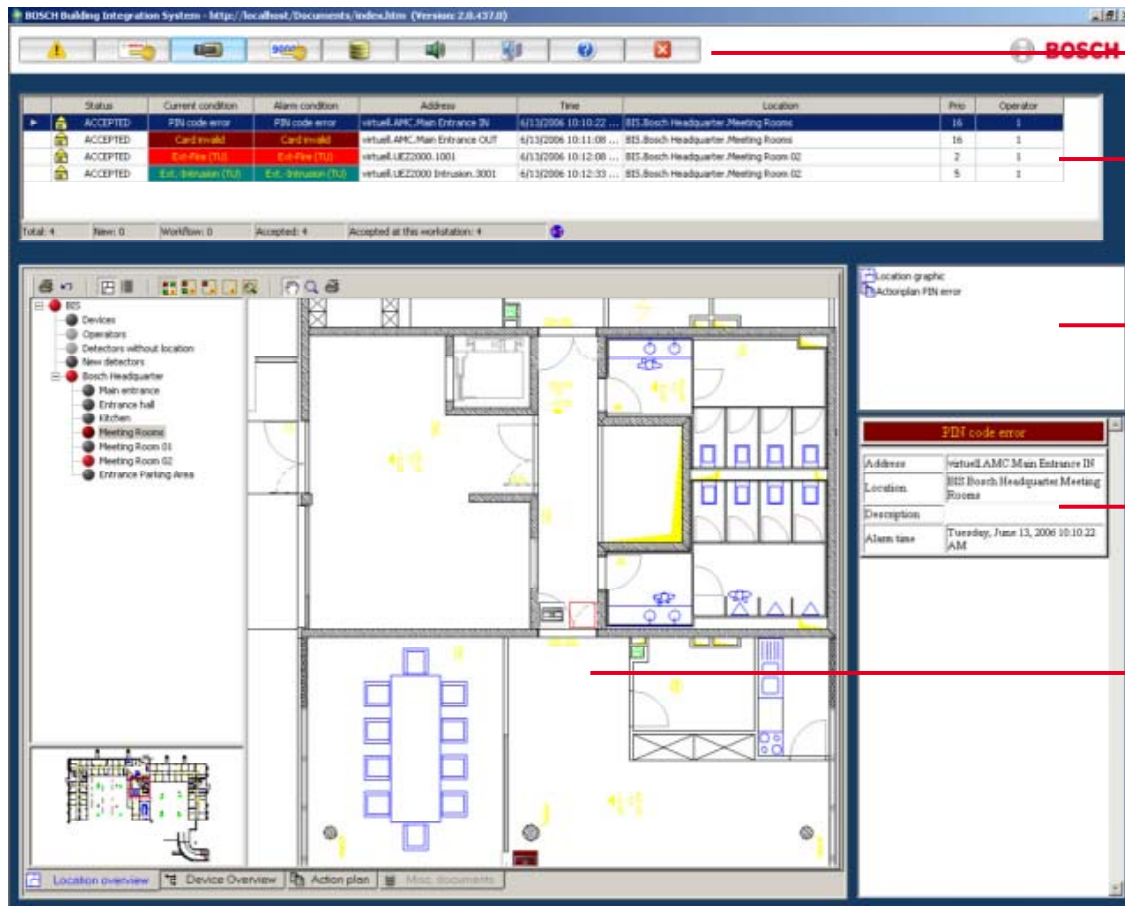
Building Integration System - The Access Engine

The system structure



Building Integration System - The Access Engine

The individual user interface (default layout)



toolbar

alarm queue

individual alarm document list

alarm details

combo control element with

- location tree
- location overview
- location map
- device overview
- action plan display
- misc documents display (contents switched by tabs)

Security Systems



BOSCH

Building Integration System - The Access Engine

The BIS user interface with Access Engine

The screenshot displays the BOSCH Building Integration System (BIS) user interface. At the top, there is a table showing an alarm queue with columns for Status, Current condition, Alarm condition, Address, Time, Location, Pres, and Operator. Below this, a 'Video Verification' window is open, showing a 'Live image' of a person at a door and an 'Image in User Database' for Reinhard Bloss. To the right, an 'Alarm details' panel provides information about the alarm, including the address, first name, name, card number, message text, device type, location, description, and alarm time. At the bottom, a 'Protocol' table lists actions such as 'Message acknowledged', 'Button 'Grant Access' pressed', 'Door cycled - command sent', and 'getting Sequence'. The interface includes various navigation buttons like 'Grant access', 'Deny Access', 'Delete message', 'Cycle door', 'Location overview', 'Device Overview', 'Action plan', and 'Misc. documents'.

Status	Current condition	Alarm condition	Address	Time	Location	Pres	Operator
ACCEPTED	Access	Request access	AccessEngine.Devices.Store-Bu...	8/1/2006 6:55:49 PM	BIS-Bosch HQ Ottobrunn Meeting Room 02	14	BIS

Video Verification
Somebody tries to get access at reader WIE1 Reader at 8/1/2006 / 6:55:49 PM

Live image

Image in User Database

Reinhard Bloss

Buttons: Grant access, Deny Access, Delete message

Alarm details:
Address: AccessEngine.Devices.Store-In.Evert
First name: Reinhard
Name: Bloss
Card no: 000000000400
Msg text: access request to DMS
Device type: READER
Location: BIS-Bosch HQ Ottobrunn Meeting Room 02
Description: WIE1 Reader
Alarm time: Tuesday, August 01, 2006 6:55:49 PM

Protocol:

Action	Time	User	Computer
Message acknowledged	Tuesday, August 01, 2006 6:55:51 PM	BIS	BAHOKOK
Button 'Grant Access' pressed	Tuesday, August 01, 2006 6:56:03 PM	BIS	BAHOKOK
Door cycled - command sent	Tuesday, August 01, 2006 6:56:03 PM	BIS	BAHOKOK
getting Sequence	Tuesday, August 01, 2006 6:56:03 PM	BIS	BAHOKOK

alarm queue with
Video Verification alarm

action plan with
- live image from door
- cardholder photograph
- action buttons to cycle
door or deny access

alarm details

switch to location map to
check which door/reader



The door template philosophy

- Select, configure individual settings, load and use
- Select from a wide range of door scenarios, such as standard door with in/out reader, turnstile, mantrap, elevator, ...
- Change standard door settings, such as open time, if they differ from your requirements
- Load to controller and use
- Each template provides the corresponding wiring plan for the installer in the means controller input/output to door contact/strikes



Building Integration System - The Access Engine

Parking lot and elevator management

- Specific door templates to manage your parking areas or the access to specific floor levels
- Provides the balancing for the number of cars with the corresponding control of barriers and traffic lights
- Control an elevator with one reader and up to 56 logical floor permissions



Security Systems



BOSCH

Guard tour and IDS arming

- Use your access hardware for sophisticated guard tour
 - up to 20 tours simultaneous
 - up to 10 readers per tour
 - use standard cards
 - actual status in BIS user interface with alarm processing on abnormalities

- Arm and disarm your intrusion detection system*
 - use standard cards
 - use keypad readers
 - get informed on actual status

*** not supported by every IDS or reader brand/type**



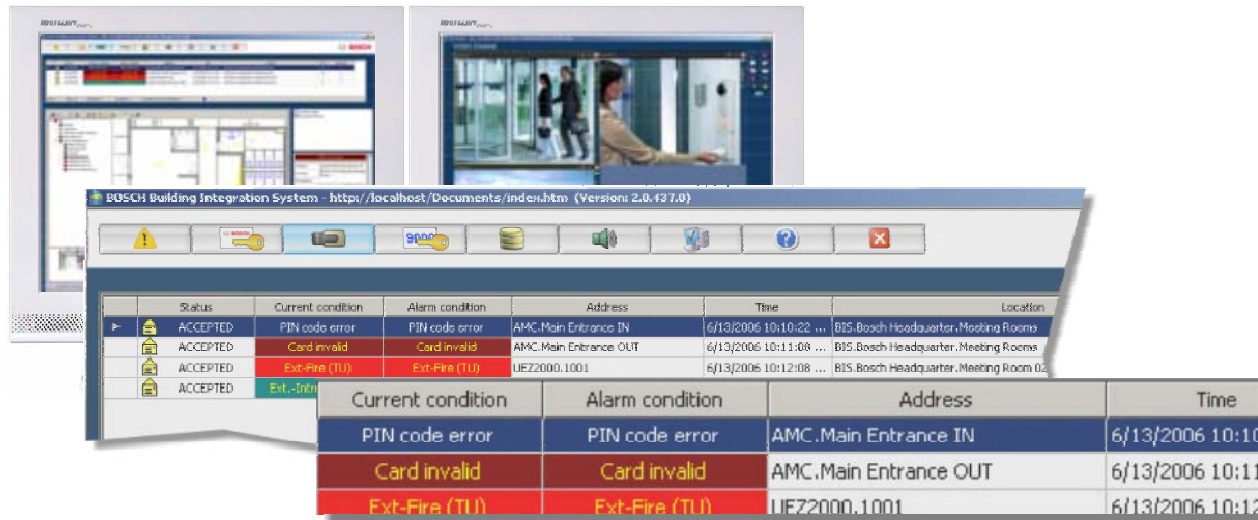
Security Systems



BOSCH

Building Integration System - The Access Engine

Access control and video



The screenshot displays the BOSCH Building Integration System interface. It features a top navigation bar with various icons and a main content area with a table of access control events. The table has columns for Status, Current condition, Alarm condition, Address, Time, and Location. The events listed are:

Status	Current condition	Alarm condition	Address	Time	Location
ACCEPTED	PIN code error	PIN code error	AMC.Main Entrance IN	6/13/2006 10:10:22 ...	BIS.Bosch Headquarter, Meeting Rooms
ACCEPTED	Card invalid	Card invalid	AMC.Main Entrance OUT	6/13/2006 10:11:08 ...	BIS.Bosch Headquarter, Meeting Rooms
ACCEPTED	Ext-Fire (TU)	Ext-Fire (TU)	UEZ2000.1001	6/13/2006 10:12:08 ...	BIS.Bosch Headquarter, Meeting Room 02
ACCEPTED	Ext.-Intr.				

Below the main table, there is a detailed view of the 'Ext-Fire (TU)' event, showing the following data:

Current condition	Alarm condition	Address	Time
PIN code error	PIN code error	AMC.Main Entrance IN	6/13/2006 10:10:22
Card invalid	Card invalid	AMC.Main Entrance OUT	6/13/2006 10:11:08
Ext-Fire (TU)	Ext-Fire (TU)	UEZ2000.1001	6/13/2006 10:12:08

- Direct reaction on any access control alarm, such as door open time exceeded, duress alarm, video verification
- Local storage or triggering archives in connected DVR systems
- Permanent surveillance of entrances or parking lots



Building Integration System - The Access Engine

Access Engine features at a glance

- Wide range of pre-defined door models, click and use, providing the corresponding wiring table
- Anti-passback
- Blacklist
- Route
- Area balancing and access sequence check
- Parking lot management and elevator control
- Guard tour



Security Systems



BOSCH

Building Integration System - The Access Engine

Access Engine features at a glance

- Import and export of cardholder master records
- Random screening
- Mantrap control and video verification
- Visitor management
- Arming and disarming intrusion detection systems
- Detailed event log for recording access events and alarms
- Integrated filter functions



Security Systems



BOSCH

Building Integration System - The Access Engine

Access Engine features at a glance

- Export in standard CSV-format for further use in other applications
- PIN code with duress alarm
- Time profiles and scheduler for access permissions and time based automatic control
- Remote control of doors and readers individually by location map icons, action buttons, device list, action plan or other common BIS features
- Full security management on top with display of location maps, action plans, live video and more



Security Systems



BOSCH

Building Integration System - The Access Engine

Access Engine features at a glance

- In combination with Video Engine direct support of Bosch and 3rd party video systems
- Direct support of DVR systems using their alarm archives
- and much more



Security Systems



BOSCH

Building Integration System - The Access Engine

The state-of-the-art AMC controllers series



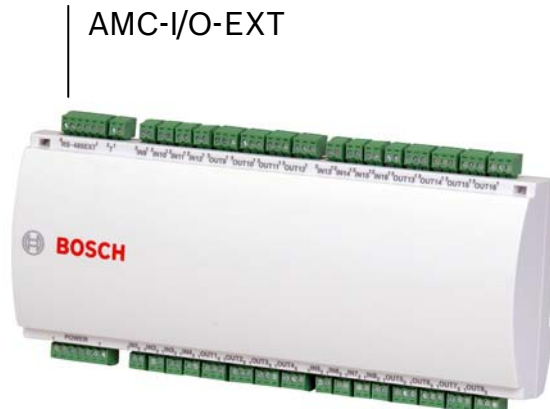
Security Systems



BOSCH

Building Integration System - The Access Engine

AMC controller series overview



Security Systems



BOSCH

Building Integration System - The Access Engine

AMC and enclosures



- Enclosures
 - for UL approval
 - for VdS approval (Europe)



Security Systems



BOSCH

Building Integration System - The Access Engine

The AMC V2 controller

- Up to 4 reader channels
 - supporting iClass, Mifare and compatible readers with Wiegand interface
 - auto-assigned to corresponding ACE door templates including the in- and outputs
- Ethernet and serial host interface to ACE server
 - supporting DHCP
 - password protected access for setup
- Display with step-through-button for perfect device status overview
- Standard rail-mountable



Building Integration System - The Access Engine

The AMC V2 controller

- RS485 bus for I/O extension support
- 2- and 4-state operation on inputs with software selectable terminators
- CF-card memory
 - default 64MB
 - up to 1GB
 - for up to 200,000 cardholders
- Internal, offline capable associations of states and events to trigger outputs, such as trigger buzzer when door open time is exceeded



Building Integration System - The Access Engine

The AMC I/O extension

- standard rail-mountable
- 8 and 16 I/O version
- 2- and 4-state operation on inputs with software selectable terminators
- internal and external power supply for in- and outputs selectable
- up to 3 connectable to 1 AMC by RS485
- extends elevator door template to 56 floors
- supports simple intrusion functionality
- I/Os could be used inside the AMC associations



Building Integration System - The Access Engine

The power supply and charging unit

- integrated charging unit for batteries
- Nominal output power 60 W
- Nominal output voltage 12 V and 24 V
- Input voltage range 100 VAC to 240 VAC
- Battery support up to 14 Ah
- Short circuit protection
- Overload protection
- Regulation of battery charging voltage with temperature monitoring by external NTC-resistor
- Signaling for AC-OK, DC-OK, BAT-OK and BAT-operation



Building Integration System - The Access Engine

Supported readers and formats

- Wiegand interface readers
 - iClass (13,56 MHz)
 - Prox (125kHz)
 - Mifare (CSN)
 - 26-Bit
 - 37-Bit
 - HID-1000
 - ...



Security Systems



BOSCH