

<b>SECURITON</b> © Copyright by Securiton	<b>MCP 535</b>		<b>T 137 895 E</b>			<b>1 / 2</b>
<b>SecuriStar®</b> <b>Data Sheet</b> <b>Manual Call Point for SecuriLine®</b> <b>MCP 535</b>	<b>Version</b>	<b>Date</b>	<b>Ind.</b>	<b>Mod. No</b>	<b>Code</b>	<b>Approved by</b>
	<b>First issue</b>	<b>01.09.98</b>	---		<b>Bm</b>	<b>VES / Bm</b>
	<b>Current</b>	<b>01.03.99</b>	<b>a</b>	<b>Terminal</b>	<b>Bm</b>	<b>Print</b>
	<b>Ref. Doc.</b>	<b>T 137 895</b>				<b>Securiton / ksa</b>

## Description

Sector:	BMA Type 535
Participant on:	SecuriLine® loop circuit
Purpose:	Fully addressable Manual Call Point from production date 290199
Applicability:	D, EN 54 / DIN
Component of:	SecuriPro® / SecuriStar®

### MCP 535 Versions


MCP 535-1	Red Manual Call Point *	IP 52
MCP 535-2	Red Manual Call Point *	IP 54
MCP 535-3	Blue Manual Call Point	IP 52
MCP 535-4	Blue Manual Call Point	IP 54
MCP 535-5	Yellow Manual Call Point	IP 52
MCP 535-6	Yellow Manual Call Point	IP 54

\* Corresponds to DIN14655

The Manual Call Point MCP 535 is a nonautomatic detector for fire alarm systems. An alarm is triggered by breaking the glass and pressing the button. The pushbutton remains locked. The triggered state of the Manual Call Point is indicated by the built-in LED.

An addressing module is installed in the MCP 535-x Manual Call Point for SecuriLine® data transmission.

The MCP 535-x can be connected to the SecuriLine® loop circuit of the SecuriPro® fire alarm system.

	<b>Danger information</b>
	All MCP 535 have emergency alarm capability. In the event of a SecuriLine® data fault, only a fire alarm is triggered by each MCP version when the button is pushed.

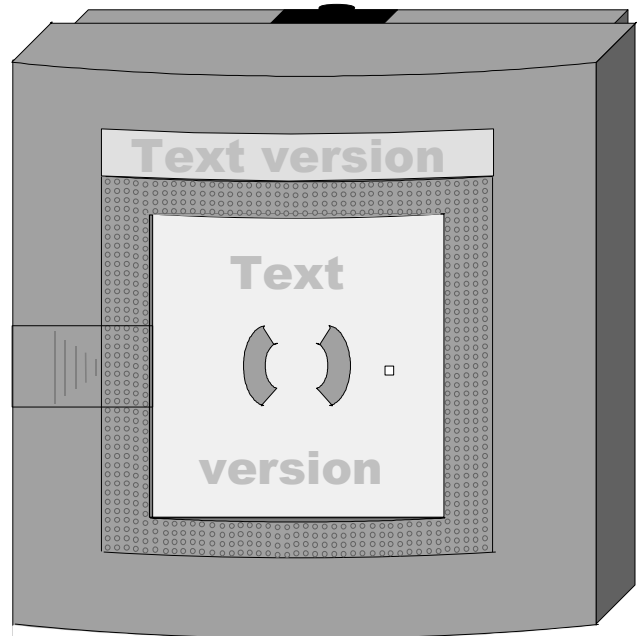
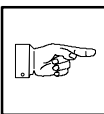


Fig. 1 MCP 535 (See manufacturer's list for text variants)

## Planning

	<b>Information</b>
	The national guidelines for planning and installation of automatic fire alarm systems and the valid building regulations are applicable for planning.

## Technical data for MCP 535

Operating voltage	15 to 30	V-DC
Current consumption at 30 V-DC	normal	250 $\mu$ A
	alarm (normal mode / emergency alarm mode)	5 / 20 mA
Signal transmission	serial data transmission, 2-conductor technology	
Line receiving unit	SecuriLine® module, SCB 01	
Applicable standards	DIN Push-button fire alarm prEN Manual Call Point	14654 54/11 Type B
Protection category	IEC 529 / EN 60529 (1991)	IP 52 / 54
Ambient conditions acc. to IEC 721-3-3 / EN 60721-3-3 (1995)		3K5 / 3Z1 Class
Extended temperature range for use		-20 to +50 °C
Operating principle	Pushbutton with lock	
Installation method	Surface-mounted	
Installation height above floor or according to valid guidelines	1.4	m
Terminals	max. 1.5	mm <sup>2</sup>
Dimensions incl. cable entries (W x H x D)	134 x 134 x 36	mm
Housing colour	red 3001 / blue xxxx / yellow xxxx	RAL
Housing material	Plastic	
Weight	450	g
Labelling variants and languages	acc. to manufacturer's list	

## Mounting and installation

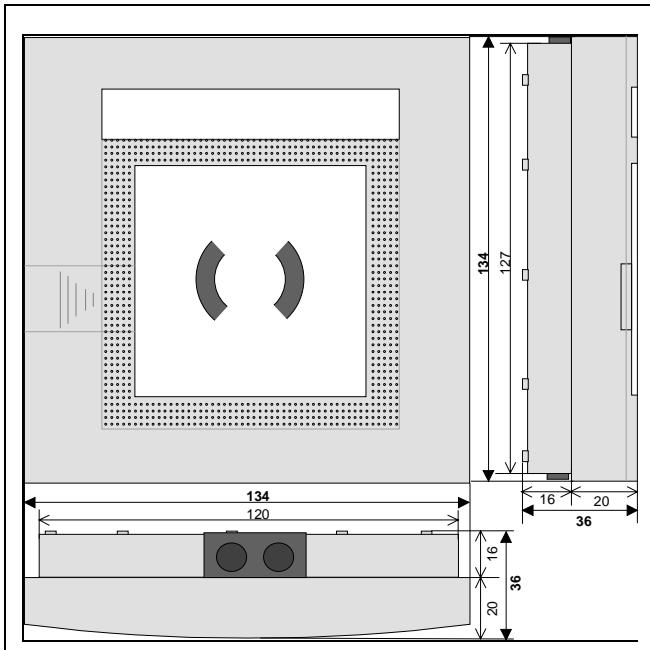


Fig. 2 Dimensioned diagram of MCP 535-x (in mm)

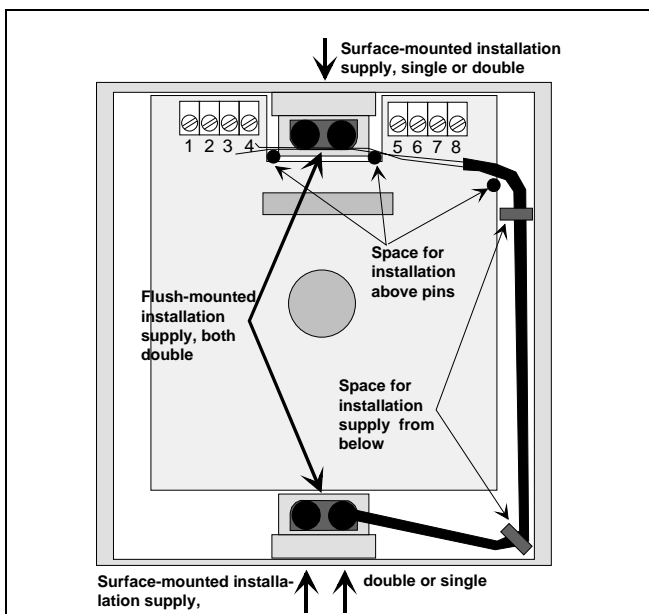


Fig. 3 Cable entries and laying within MCP

## Article numbers and spare parts

Type / Article / Component	Part No. HEKATRON	Part No. SECURITON
MCP 535-1	6200146 0001	011.214 272
MCP 535-2	6200146 0002	011.214 280
MCP 535-3	6200146 0003	011.214 299
MCP 535-4	6200146 0004	011.214 302
MCP 535-5	6200146 0005	011.214 310
MCP 535-6	6200146 0006	011.214 329
Key for MCP	6200147	118.214 337
Spare glass pane for MCP	6200148	306.214 345
Labels, text and language variants	See manufacturer's list	

### Connection of MCP 535 to SecuriLine® 2 wire

Terminal**	Designation	Signal
1	vacant	
2	Data (in)	+
3	GND (in)	-
4	Restart point cable shield*	
5	vacant	
6	Data (out)	+
7	GND (out)	-
8	Restart point cable shield*	

\* Cable shield only if required

### Connection of MCP 535 to SecuriLine® 3 (4) wire

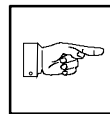
Terminal**	Designation	Signal
1	Restart point supply	24 VDC
2	Data (in)	+
3	GND (in)	-
4	Restart point GND or cable shield	4 <sup>th</sup> wire 3 <sup>rd</sup> wire
5	Restart point supply	24 VDC
6	Data (out)	+
7	GND (out)	-
8	Restart point GND or cable shield	4 <sup>th</sup> wire 3 <sup>rd</sup> wire

\* Cable shield only if required. On 4<sup>th</sup> wire, connect cable shield with external terminal.

\*\* The following terminals are connected to one another:

- 1 and 6 // 3 and 7 // 4 and 8

### Information



- The national regulations and guidelines must be observed with regard to mounting and installation.
- The MCP can be opened only by means of a key.
- After actuation of the MCP, the alarm button is locked. The control panel can be reset only after the alarm button has been released.

### Form supplied

The MCP are delivered in packaging with a drilling template and installation instructions, a glass pane and the "Out of operation" label. The desired number of keys and the required labels must be ordered separately.